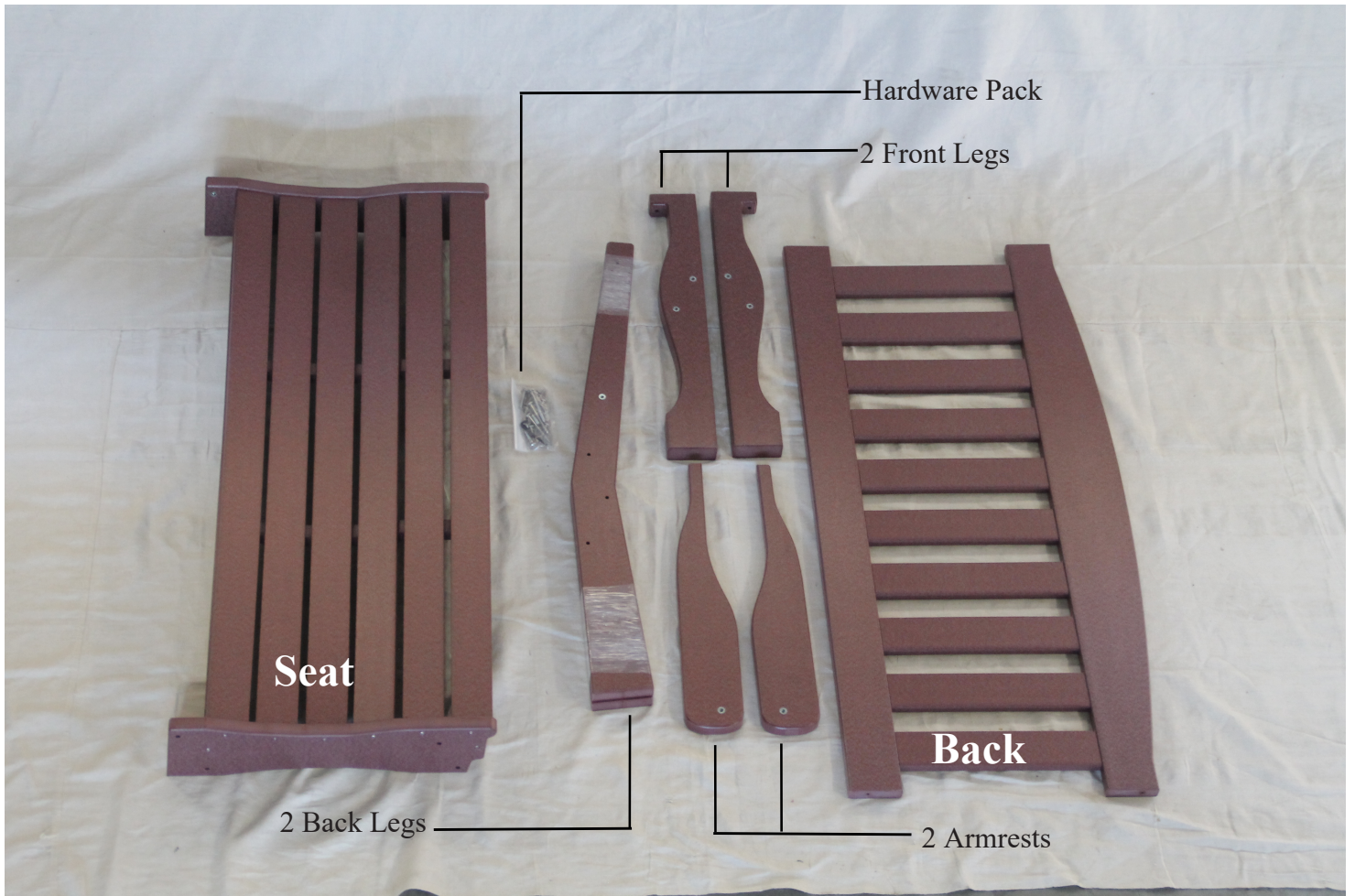


# POLY ENGLISH GARDEN BENCH



## ASSEMBLY MANUAL

# Parts List



## Tools Required For The Job (Included)



5/32" Hex Key

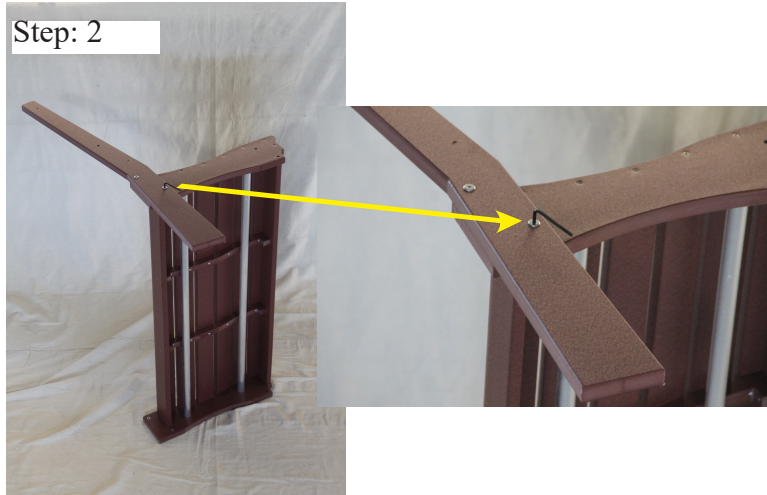
\*NOTE: This Hex Key is used to tighten all the screws used in the assembly process.

Step:1



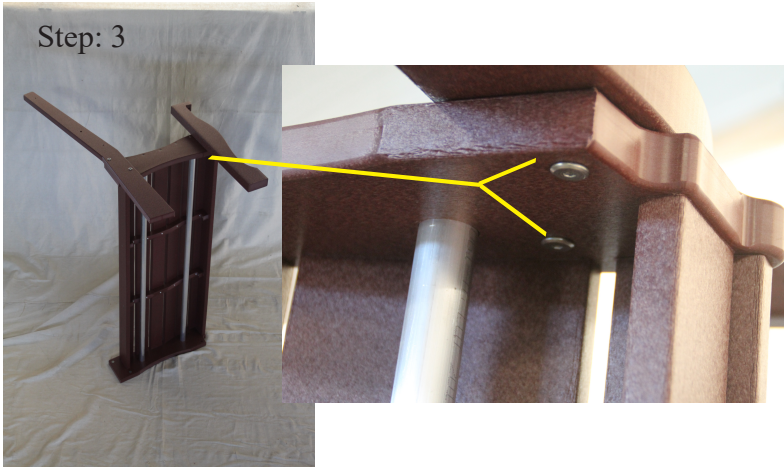
This is how your package will look when at the beginning.

Step: 2



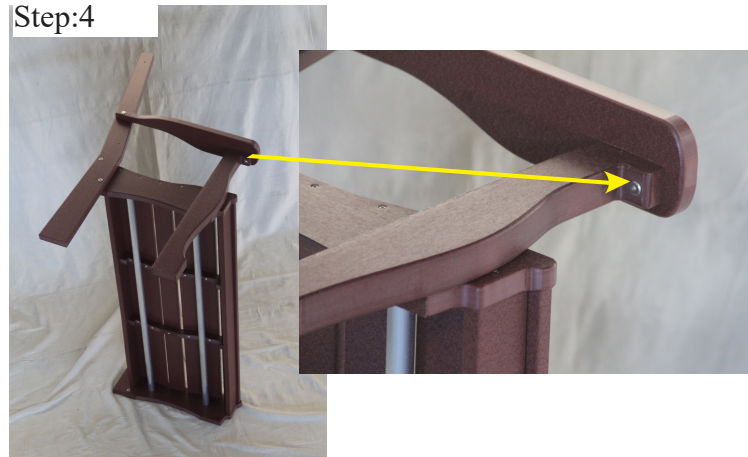
Place seat on end and fasten back leg to seat using two 1.5" bolts.

Step: 3



Fasten front leg to seat using two 1.5" bolts.

Step:4



Fasten armrest to back leg using 2" bolt.  
Fasten to front leg using 1.5" bolt.

Step: 5



Repeat steps 2-4 on opposite end.  
Your bench should now look like this.

Step:6



Fasten back to bench using four 3" lags. Start each lag in pre-drilled pilot hole before tightening.

Step:7



Congratulations! You have now completed your English Garden Bench assembly.  
Note: The second picture shows more clearly the location of the bolts.