

Backyard Hideout



Assembly Manual

Backyard Hideout Assembly Manual

Thank you for your purchase of this hideout.

This manual is designed to simplify the assembly process, however we recommend having an experienced carpenter involved in the project. Please read through the entire manual before starting!

Take a deep breath and get at it; the satisfaction and enjoyment of this hideout is only a few minutes away. Have fun!

You have purchased a product that consists of bulky pieces. With your purchase, you assume full responsibility to have the necessary manpower available to assemble the product. You also agree that any damage that happens to the product during the entire construction process is your responsibility, and neither the seller, nor the manufacturer, will be held liable for any such damage.

Tools Required for Job



Two 4'
Step
Ladders



25' Tape
Measure



9/16th Wrench



Cordless
Drill

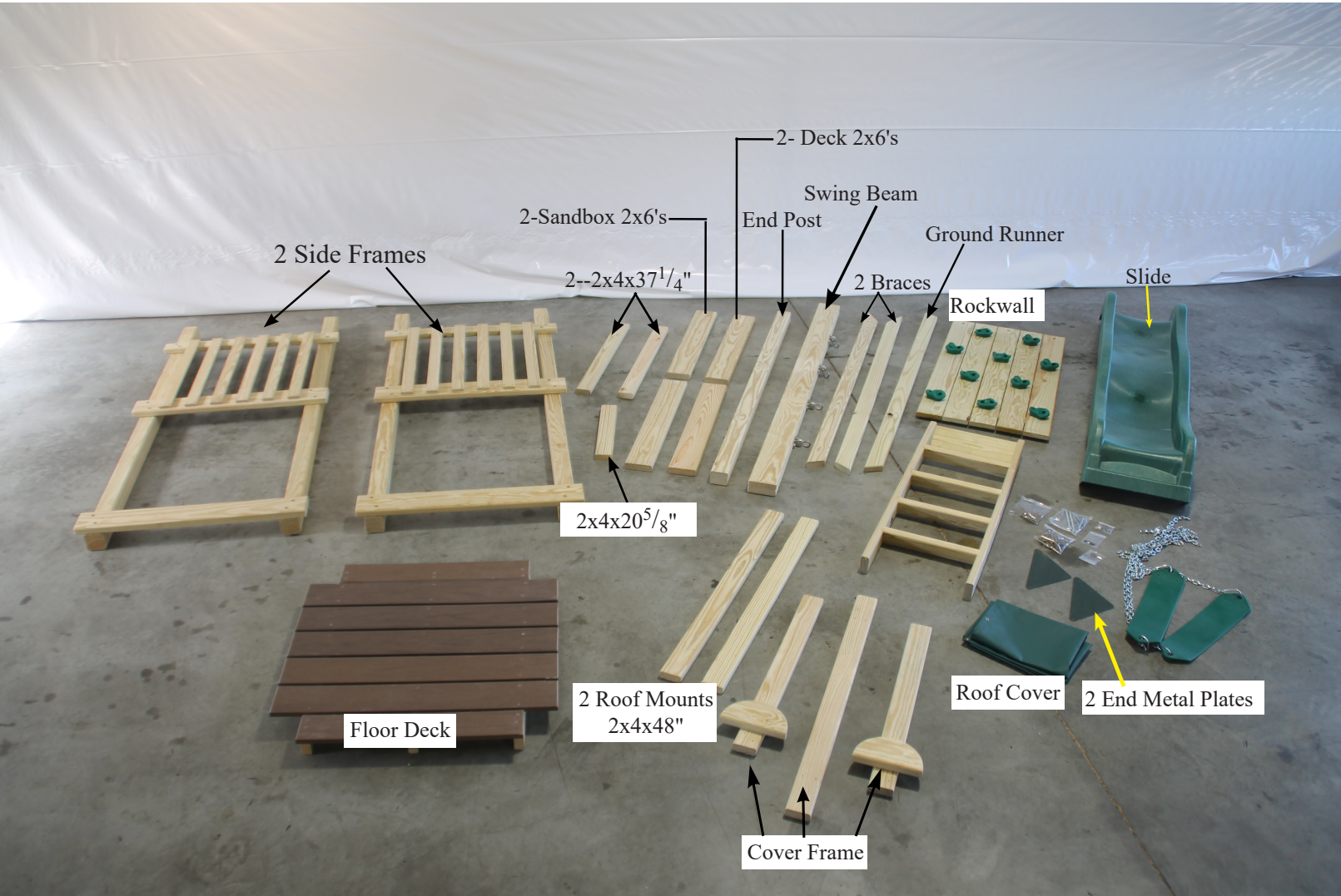


#2 Square
Drive Tip
(included)



T30 Star
Drive Tip
(included)

Parts List



Backyard Hideout Assembly Manual

Step:1



Your package will look like this at the beginning.

Step:2



Identify all the parts needed to assemble the playset.

Step:3



Place the two side frames in upright position, about 48" apart.

Step:4



Begin by fastening one of the sandbox/deck 2x6's to the 4x4's with four 5/16"x 2.5" star-drive lag screws.

Step:5



Repeat step 4 on opposite side.

Step:6



Fasten floor joist to 4x4 on side frames. Use 2.5" screws in pre-drilled holes at four corners.

Step:7



Fasten one of the deck 2x6's to the 4x4's with four 5/16"x 2.5" star-drive lag screws. Deck 2x6 should be properly aligned with 2x6's on side framing. Before fastening be sure deck is resting properly on the side frames.

Step:8



Repeat step 7 on opposite side.

Step:9



Fasten one of the 2 x 4 x 37 1/4" to the 4x4 with four 5/16"x2.5" star-drive lag screws. Be sure to properly align with 2x4 on side frame.

Step:10



Repeat step 9 on opposite side.

Step:11



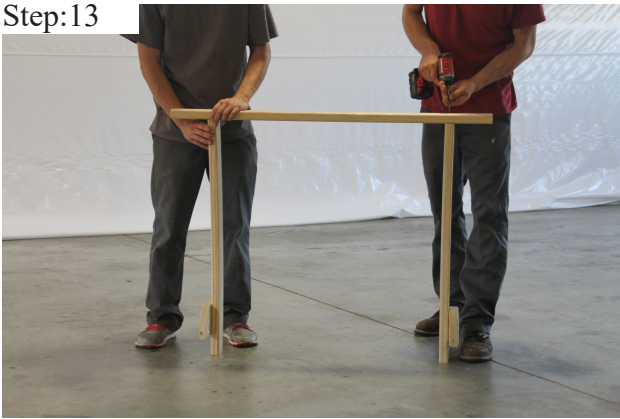
Fasten roof mount 2x4x48 with four 5/16"x 2.5" star-drive lag screws. Distance from 4x4 to end of 2x4 should measure approximately 5 3/8".

Step:12



Repeat step 11 on opposite side.

Step:13



Assemble the cover frame with four 2.5" screws by aligning upright 2x4's with pre-drilled holes on vertical 2x4x48".

Step:14



Place cover frame on top of tower.

Step:15



Measure 14" from outside of 4x4 to half moon on cover frame.

Step:16



Fasten cover frame to tower using 2.5" screws in pre-drilled holes. Be sure half moon is resting properly on 2x4.

Step:17



Fasten half moon to 2x4 with 2.5" screws in pre-drilled holes.

Step:18



Repeat steps 16-17 on opposite side.

Step:19



Begin fastening roof cover to 2x4x48 roof mount with 3/4" cover screws. Be sure to align both ends and approximately 2" overlap, before fastening.

Step: 20



Use six screws on each side. Fasten the cover starting at one end and keeping roof cover snug between each screw.

Step:21



Drape roof cover over the cover frame and repeat step 19-20 on this side.

Step:22



Be sure to keep cover pulled tight while fastening starting at one end.

Step:23



The assembly of your tower and roof is now completed.

You are now ready to assemble the swing beam support frame. Identify all the parts needed for the assembly:

- 1 endpost
- 2 braces
- 1 ground runner

Step:24



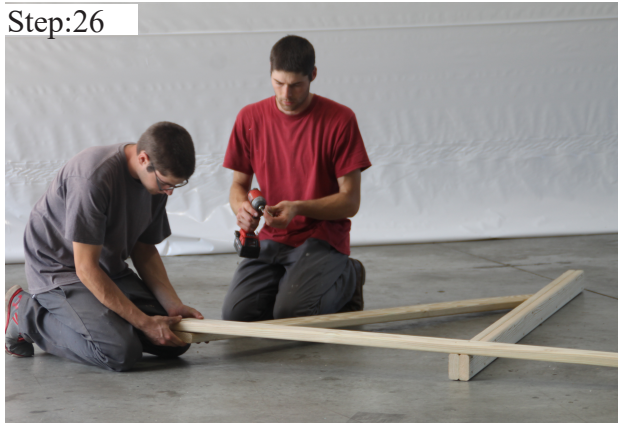
Lay ground runner on end post, with equal length on both sides of post.

Step:25



Be sure to fasten the ground runner on the end of the post without the pre-drilled holes. Use two 5/16"x2.5" star drive lag screws to fasten.

Step:26



Align angles of brace on ground runner and post. Fasten using two 5/16"x2.5" star drive lag screws.

Step:27



Align brace with end post and fasten using one 5/16"x2.5" star drive lag screw in pre-drilled hole.

Step:28



Repeat step 26 and 27 on opposite side.

Step:29



Your completed support frame should look like this.

Step:30



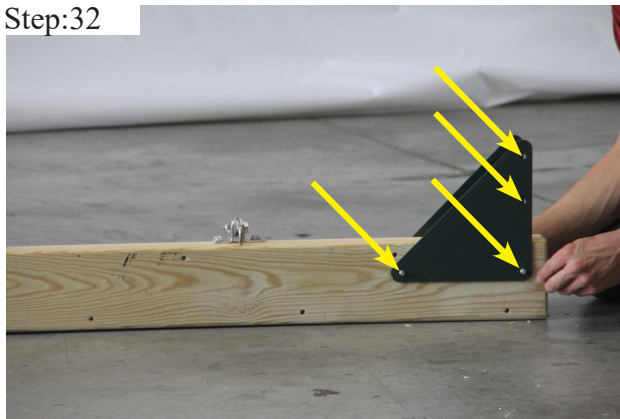
Identify the swing beam.

Step:31



Fasten metal plates to swing beam using two 3.5" bolts and nuts.

Step:32



Be sure hole orientation is as pictured!
Place second plate in position then finger tighten nuts on bolts.

Step:33



You are now ready to fasten the swing beam to the support frame.

Step:34



Fasten metal plates to end post using two 3.5" bolts and nuts.

Step:35



Tighten all four bolts at this point with wrench or cordless drill.

Step:36



Position your tower in the desired location. You are now ready to attach the swing beam to the tower.

Step:37



Fasten using two 3/8x6 1/2" bolts and nuts.

Step:38



Tighten the nuts using a wrench.

Step:39



Your job is a few minutes from being completed!

Step:40



To mount the slide to the tower, first fasten the 2x4x20 5/8" to the tower using 2.5" screws in pre-drilled holes. Align 2x4 with corner of tower.

Step:41



Place entry ladder next to 2x4 and fasten using two 2" screws.

Backyard Hideout Assembly Manual

Step:42



Fasten slide to 2x4x20 5/8 using two 2" screws.

Step:43



Connect chain to bearings at desired height.

Step:44



Place rockwall against opening on back side of tower, centering between posts. Fasten using 2.5" star drive lag screws.